



Bridge Rectifiers



Features

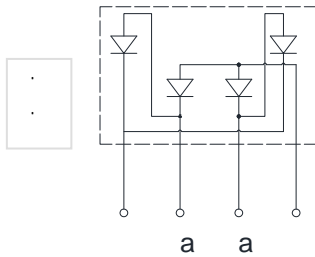
- " 8/ UHFRJQILVHRQ
- " *ODVV SDVVLYDWHG FKLS MXQFWLRQ
- " 7KLQ VLQJOH LQ OLQH SDFNDJH
- " +LJK VXUJH FXUUHQW FDSDELQW\
- " 6ROGHU GLS y & SHUJ -(6' %

Typical Applications

*HQHUDO SXUSRVH XVH LQ \$& '& EULGJH IXC
 IRU VZLWFKLQJ SRZHU VXSSO\ KRPH DSSOL
 LQG XVWULDO DXWRPDWLRQ DSSOLFDPWLRQV

Mechanical Data

- " Package .%-
- 0ROGLQJ FRPSRQ\QG PHH\DPDELQW\
 UDWLQJ 5R+6 FRPSOLDQW
- " Terminals 7LQ SODWHG OHDGV VROGHUDEOH S
 - 67' DQG -(6' %
- " Polarity: \$V PDUNHG RQ ERG\
 :LWK KHDWVLQN
 7F - ,2 \$



Maximum Ratings

& XUHQW
 # +] VLQH ZDYH 5 ORDG

	:LWKRXW KHDWVLQN			
)RUZDUG 6XUJH &XUHQW	1RQ UHSHWLWLYH			
# +] +DOI VLQH ZDYH - F\	FOH 7M			
)RUZDUG 6XUJH &XUHQW	1RQ UHSHWLWLYH			
# PV VTXDUH ZDYH - F\	FOH 7M			
&XUHQW VTXDUHG WLPH	SHU GLRGH			
# PV"W" PV 7MDWLQJ RI				
6WRUDJH WHPHUDWXUH	7VWJ -			a
-XQFWLRQ WHPHUDWXUH	7M -			a
'LHOHFWULF VWUHQJWK	9GLV 9			
# 7HUPLQDOV WR FDUH \$ &	FLQXWH			
0RXQLQJ WRUTXH	7RU NJ FP			
# 5HFRPPHQG VNRWFXH				

Electrical Characteristics 7D - 8QOHVV RWKHU 7LVH VSHFLILHG

PARAMETER	SYMBOL	UNIT	TEST CONDITIONS	KBJ10005A	KBJ1001A	KBJ1002A	KBJ1004A	KBJ1006A	KBJ1008A	KBJ1010A
0D[LPXP LQVWDQWDQHRXV	WDQHRXV									
IRUZDUG YROWDJH 9UR9 SHU ,)0 \$										
GLRGH										
0D[LPXP '& UHYHUVH	UVH		7M -							
FXUUHQW DW UDWHG & \$			0RFNLQJ							
YROWDJH SHU GLRGH			7M -							
7\SLFDO MXQFWLRQ FDSDF			0HDVXUH DW 0+]							
			DOG \$SSQLHG S)							
			5HYHUVH 9RWDJH RI							
			9' &							



KBJ10005A THRU KBJ1010A

Thermal Characteristics

PARAMETER	SYMBOL	UNIT	KBJ10005A	KBJ1001A	KBJ1002A	KBJ1004A	KBJ1006A	KBJ1008A	KBJ1010A
-----------	--------	------	-----------	----------	----------	----------	----------	----------	----------

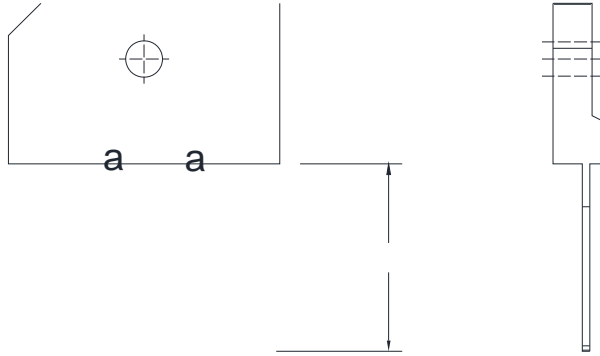
%HWZHHQ MXQFWLRQ DQG DPDLHQW
 7KHUPDO LWKRXX KHDWVLRQ
 5HVLVWDQFH



KBJ10005A THRU KBJ1010A

vOutline Dimensions

. % -



'LPHQVLRQV LQ PLOOLPHWHUV

